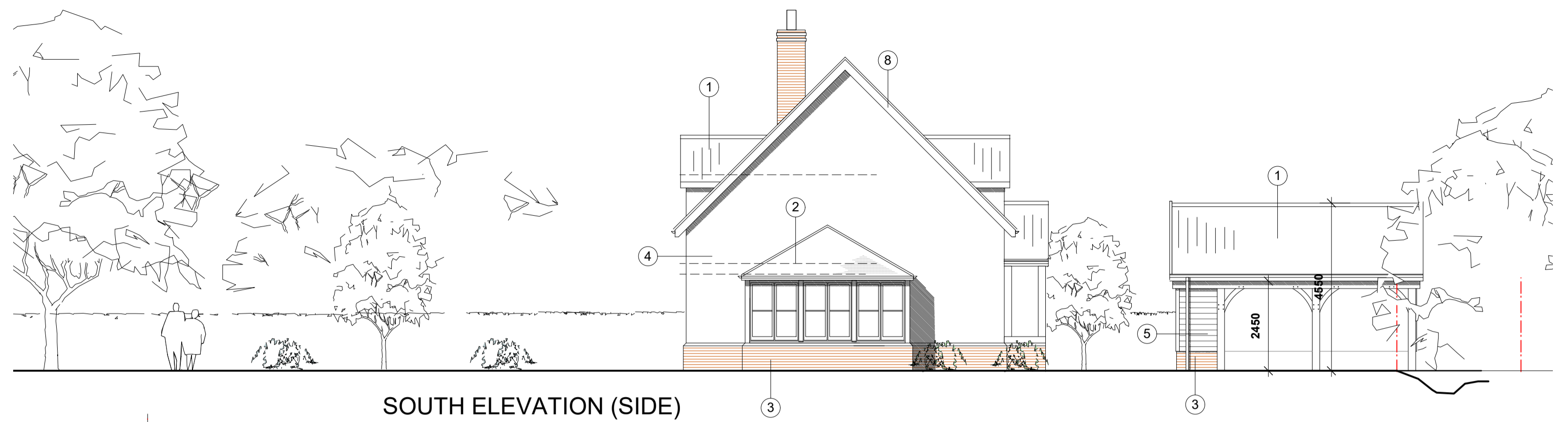


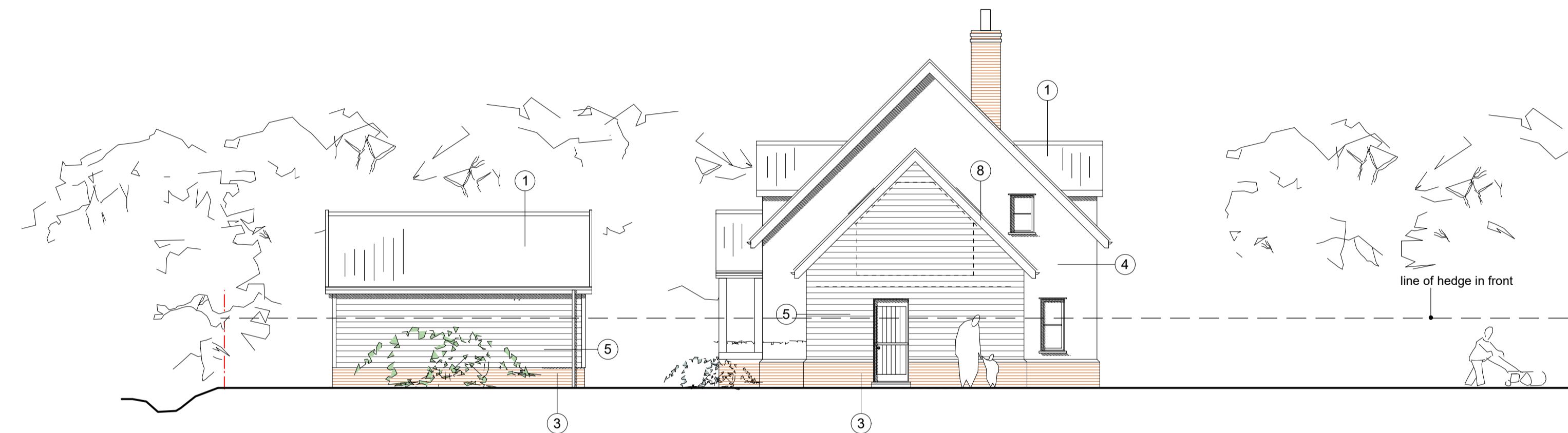
FIRST FLOOR PLAN



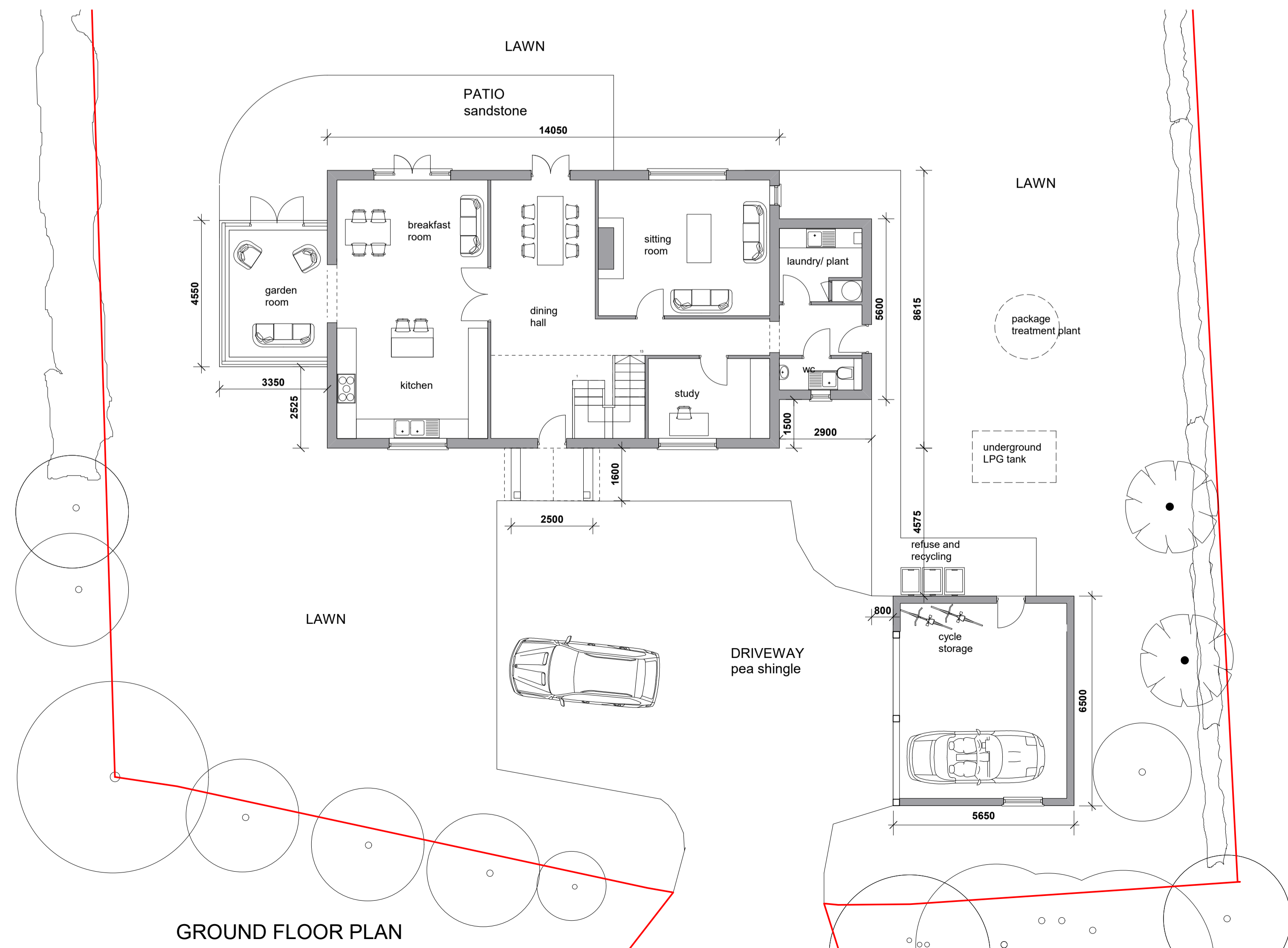
SOUTH ELEVATION (SIDE)



EAST ELEVATION (FRONT)



NORTH ELEVATION (SIDE)

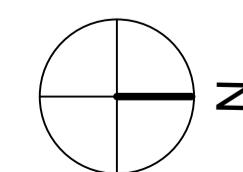


GROUND FLOOR PLAN



WEST ELEVATION (REAR)

- KEY TO MATERIALS:**
- 1 - red clay pan tiles (Wienerberger 'arcadia' traditional pantile)
  - 2 - natural slate
  - 3 - soft red brick plinth with chamfered top course (Wienerberger 'malden antique')
  - 4 - painted sand cement render (Dulux 'county cream')
  - 5 - featheredge weatherboarding (painted Farrow and ball 'white tie' to house/ stained black to cartlodge)
  - 6 - green oak frame, oak front door
  - 7 - painted softwood window frames (Farrow and ball 'white tie')
  - 8 - painted softwood barge boards/ soffits (Farrow and ball 'white tie')
  - 9 - conservation rooflights



0 5 10m

**PLANNING**

Project <b>LAND ADJ. THE WHITE HORSE, WHEPSTEAD, IP29 4SS</b>		hitchcock architects ltd 18 The Avenue Sunbury-on-Thames Midsx TW16 5ES
Drawing <b>PROPOSED PLANS AND ELEVATIONS</b>		
Drawing No. <b>RRW-104</b>	Scale <b>1:100 @ A1</b>	Date <b>05.03.2018</b>
		m: 07955 52478 e: andrew@hitchcockarchitects.co.uk www.hitchcockarchitects.co.uk

